



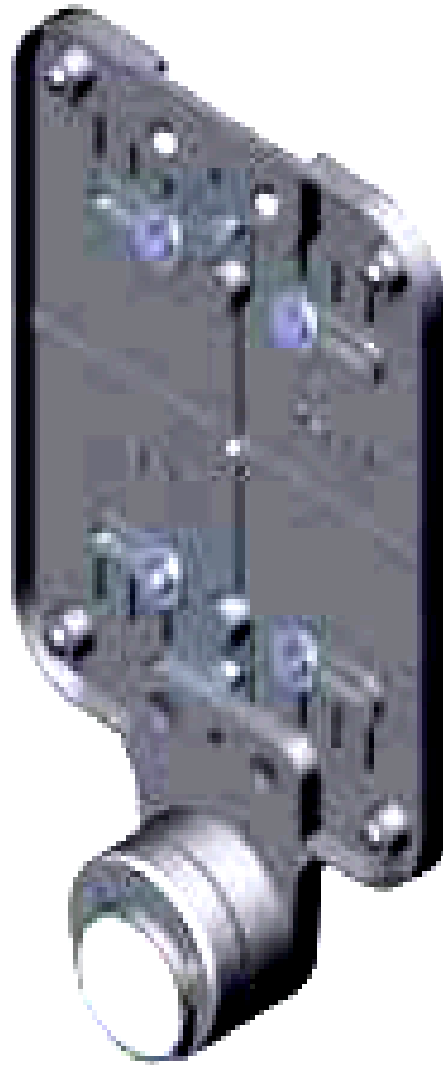
# **COST CAST, INC**

**TRAFFIC SIGNAL AND SIGN MOUNTING HARDWARE**

## **Pole Hardware**

### **Push Button Assembly**

### **1347-9X15**



- Cast From High Quality Certified Aluminum Ingot
- Certified Stainless Steel Hardware
- Weather Resistant Powder Coating with multiple colors available including Black and Federal Yellow



**COST CAST, INC. MANUFACTURES THE "ZERO FAILURE" TRAFFIC SIGNAL HARDWARE EXCLUSIVELY MADE IN AMERICA.**