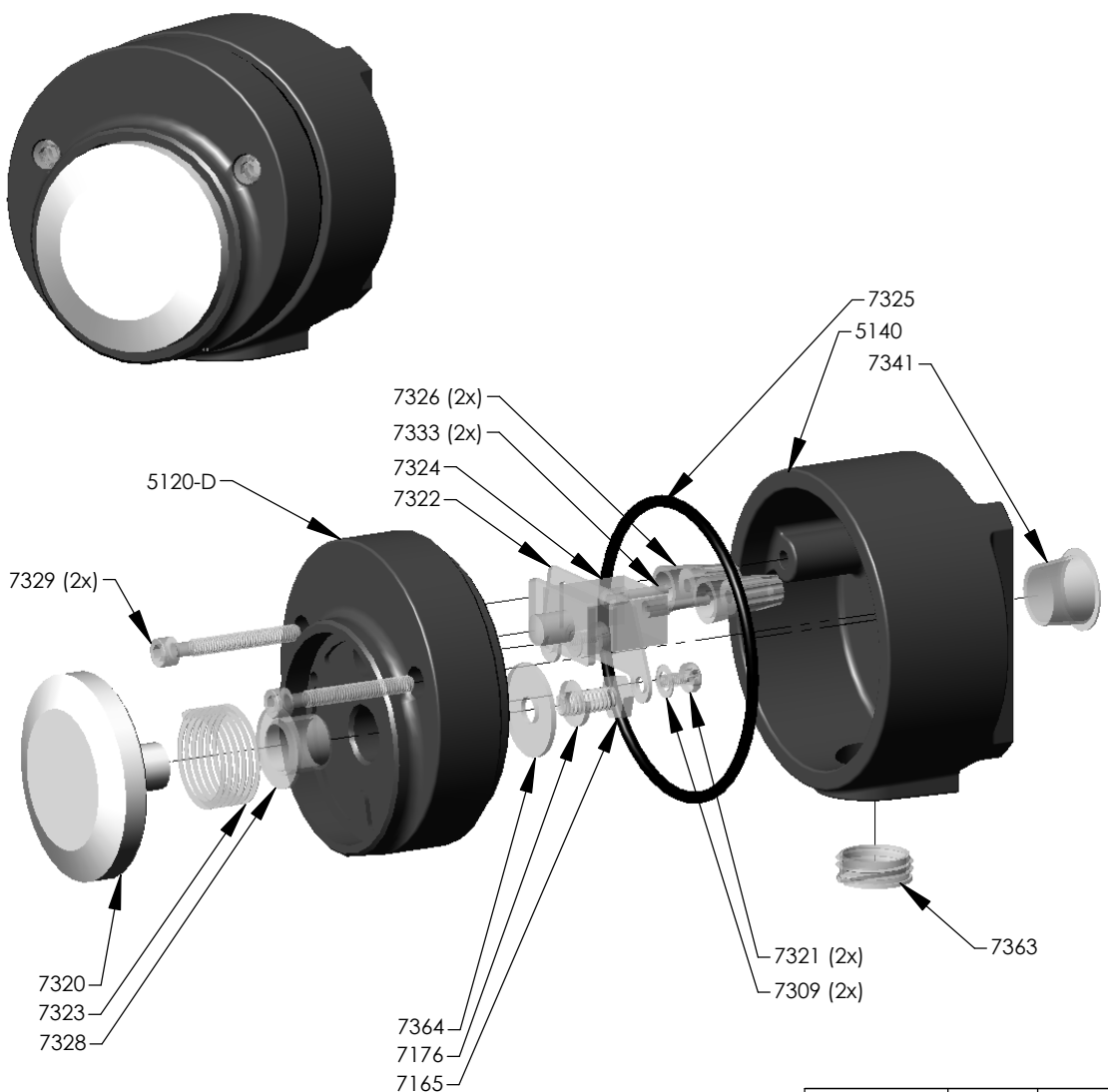


REVISIONS			
REV.	DESCRIPTION	DATE	APPROVED
A	INITIAL RELEASE	5/5/2015	AMK



ITEM NO.	DESCRIPTION	QTY.
1347-F	1347 Push Button Model F	
5140	1347 Push Button Base Plate, Florida	1
5120-D	1347 Push Button Cover, 2" Plunger, Machined, Drilled + Tapped	1
7328	1347-A Push Button Bushing, Plastic, 1/2" ID, 1/2" Long	1
7324	Switch, Push Button Microswitch, Snap-In	1
7333	Wire, 14 600V Black Tinned Copper Hookup Wire	2
7326	1347-A Wire Connector, 22-14 AWG	2
7322	1347-A Push Button Switch Retaining Plate	1
7321	#8-32 x 3/8" Thread Cutting Screw, Phillips Pan Head, Type F, SS	2
7309	#8 Washer, SS	2
7320	Push Button Plunger, Mushroom, 2" Dia., Machined Aluminum Finish	1
7323	1347-A Push Button Spring, Wave, 1.07" OD, 40.99K	1
7165	1/4"-20 x 5/8" Cap Screw, Hex Head, SS304	1
7176	1/4" Washer, Lock, SS304	1
7364	1/4" Washer, Fender, 1" SS	1
7325	1347-A O-Ring, Black, 3.25" OD, 0.139" Thick	1
7329	#10-32 x 1-1/2" Socket Cap Screw, Hex Socket, SS	2
7363	1347-A Base Plate Conduit Plug (Die-Cast)	1
7341	1347-A Base Plate Push Plug (Plastic)	1

	NAME	DATE	UNLESS OTHERWISE SPECIFIED:					
DRAWN	ACW	5/5/15	DIMENSIONS ARE IN INCHES					
CHECKED	AMK	5/5/15	TOLERANCES:					
ENG APPR.			FRACTIONAL ±					
MFG APPR.			ANGULAR: MACH ± 1/32"					
Q.A.			TWO PLACE DECIMAL ± .03"					
PROPRIETARY AND CONFIDENTIAL THE INFORMATION CONTAINED IN THIS DRAWING IS THE SOLE PROPERTY OF COST CAST, INC. ANY REPRODUCTION IN PART OR AS A WHOLE WITHOUT THE WRITTEN PERMISSION OF COST CAST, INC. IS PROHIBITED.			INTERPRET GEOMETRIC TOLERANCING PER:					
			MATERIAL			SIZE	DWG. NO.	REV
			VARIOUS					
			FINISH			SCALE: 1:2 WEIGHT: SHEET 1 OF 1		
			DO NOT SCALE DRAWING					

COST CAST, INC

TITLE:
1347-F
1347 Push Button Model F

SIZE **A** DWG. NO. **13783** REV **A**