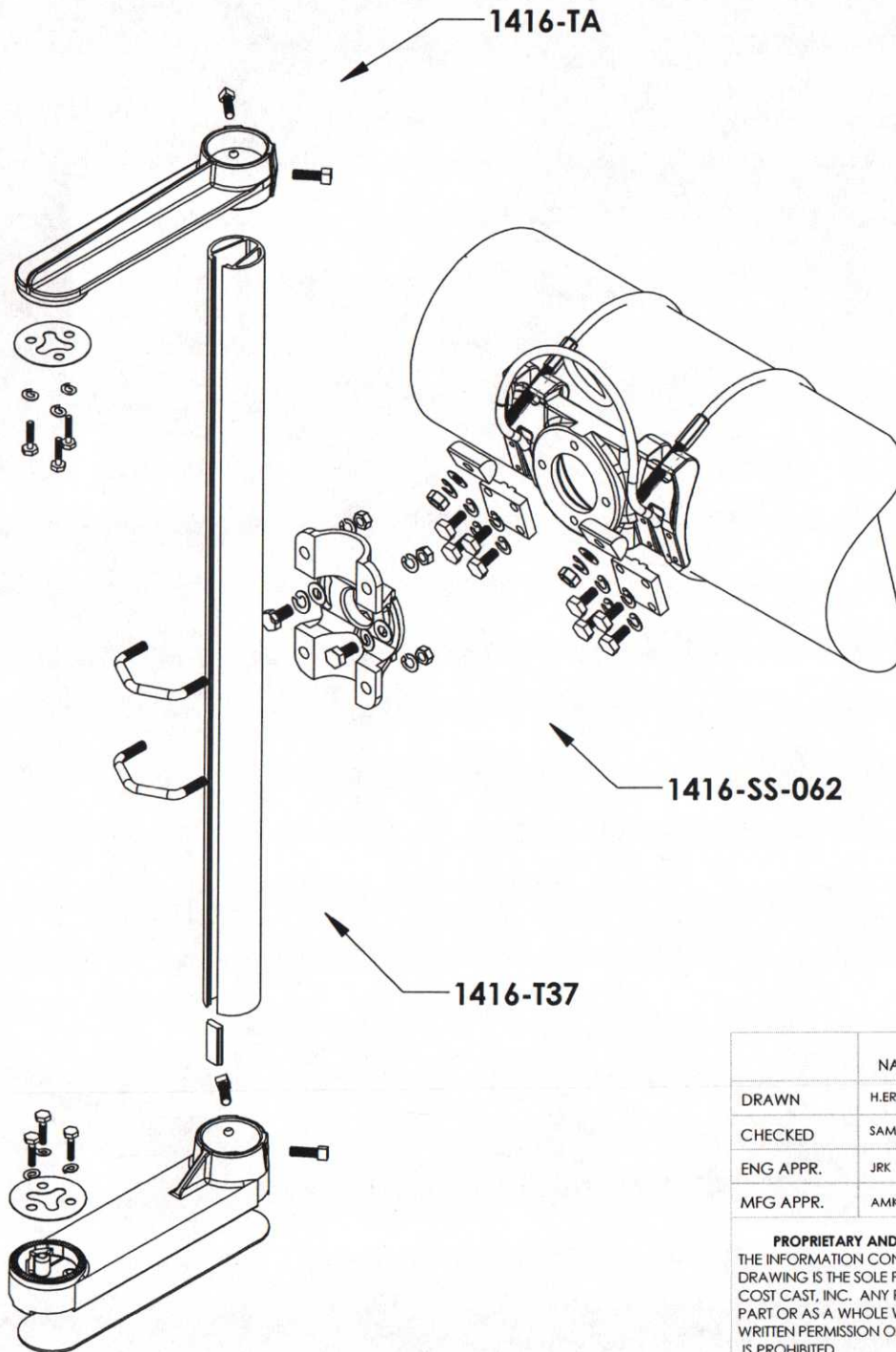


REVISIONS

REV.	DESCRIPTION	DATE	APPROVED
A	INITIAL RELEASE	12/16/13	RJT



ITEM NO.	PART DESCRIPTION	
1416-SS-062	1416 Saddle & Swivel Assembly, 62" Cable Double Swage, SS304	1
5112	1416 Mast Arm Bracket Saddle, Al Alloy 535.0	1
5113	1416 Mast Arm Bracket Swivel, Al Alloy 535.0	1
7312	Aircraft Cable, 62" Long, Double 3/8" Swage, SS304	1
7315	5/16"-18 x 3/4" Cap Screw, SS304	8
7138	5/16" Washer, Lock, SS304	8
7288	Clamp, Cable, Four-Bolt, Extruded, Al,	2
7289	Wedge, Aluminum, Extruded, 1316/1346 & 1416/1446	2
7318	3/8" Washer, Fender, Flat, SS304	2
7316	V-Bolt: 5/16"-18, SS304	2
7319	5/16"-18, Hex Nut	4
7144	3/8"-16 x 1-1/4" Cap Screw, SS304	2
7141	3/8" Washer, Lock, SS304	2
1416-TA	1416 Mast Arm Signal, Tube Arm Brackets, 1,2,3,4, & 5 In-Line Signal Section, SS 304	1
5110	1416 Mast Arm Bracket Top Arm	1
5111	1416 Mast Arm Bracket Bottom Arm	1
7317	1/4"-20 x 1-1/2" Cap Screw, Hex Head, SS304	6
7176	1/4" Washer, Lock, SS304	6
7273	Washer, Tri-Stud, Rubber	1
7118	Washer, Tri-Stud, SS304	2
7315	5/16"-18 x 3/4" Cap Screw, SS304	4
7285	Bottom Arm Cover, Plastic	1
1316-T37	1316 Mast Arm Signal, 3-Section Tube Kit	1
7283	Tube, 1-1/2" Gusset Tube, Slotted, 3-Sect, AL 6061-T6	1
7303	Tube Rubber Insert, Gussetted Slot Filler	1

	NAME	DATE
DRAWN	H.ER. B	11/12/12
CHECKED	SAM	11/18/12
ENG APPR.	JRK	12/1/12
MFG APPR.	AMK	12/3/12

PROPRIETARY AND CONFIDENTIAL
 THE INFORMATION CONTAINED IN THIS DRAWING IS THE SOLE PROPERTY OF COST CAST, INC. ANY REPRODUCTION IN PART OR AS A WHOLE WITHOUT THE WRITTEN PERMISSION OF COST CAST, INC. IS PROHIBITED.

UNLESS OTHERWISE SPECIFIED:

DIMENSIONS ARE IN INCHES
 TOLERANCES:
 ANGULAR: MACH ± 1/32"
 TWO PLACE DECIMAL ± .03"
 THREE PLACE DECIMAL ± .010"

INTERPRET GEOMETRIC TOLERANCING PER:

MATERIAL
VARIOUS

FINISH
VARIOUS

DO NOT SCALE DRAWING

COST CAST, INC

TITLE:
1416-3X-C062

Value-Brac, Mast-Arm Signal Hanger,
 3-Section Signal, 62" Cable, 37" Tube,
 Stainless Steel 304 Certified

SIZE DWG. NO.

A 13780

REV

A

SCALE: 1:16 WEIGHT:

SHEET 1 OF 1