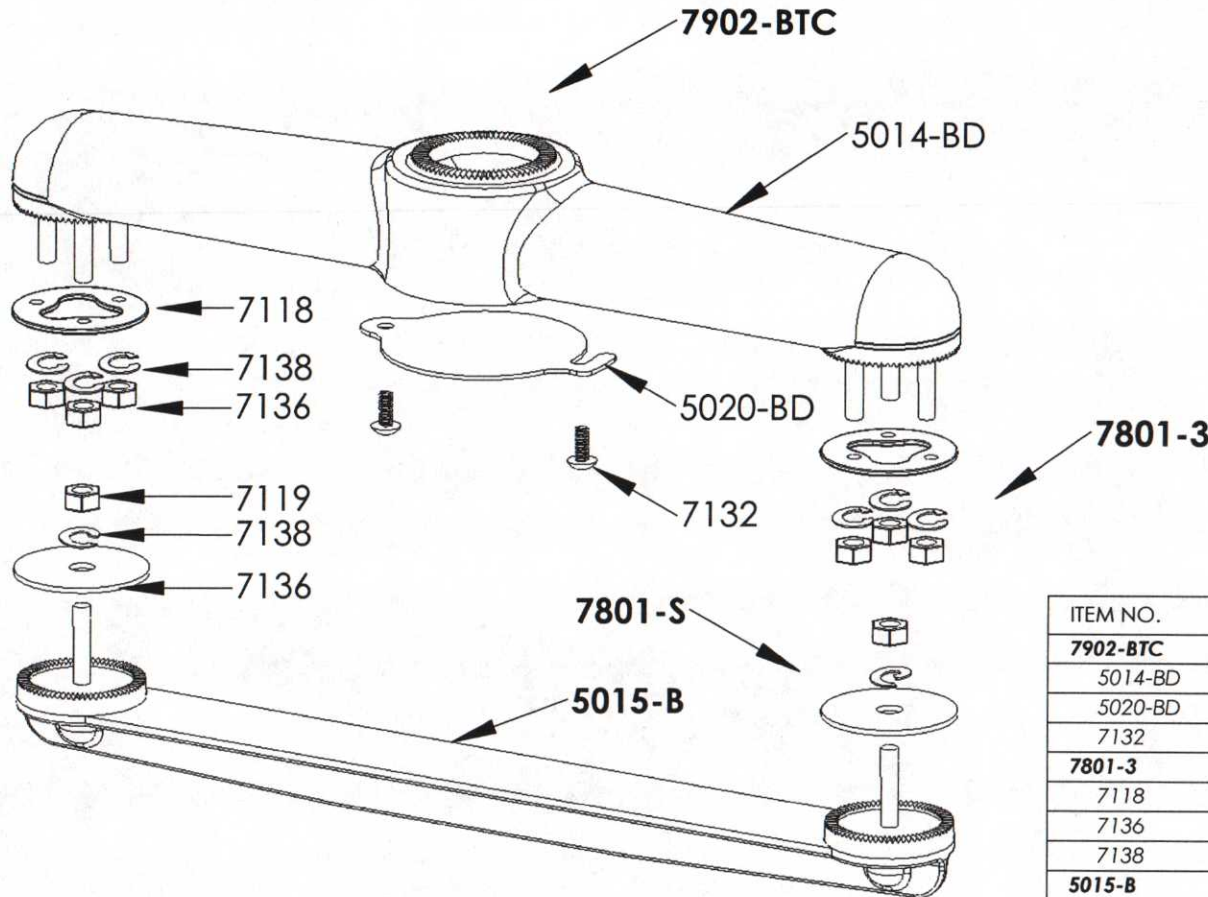


| REVISIONS | | | |
|-----------|-----------------|---------|----------|
| REV. | DESCRIPTION | DATE | APPROVED |
| A | INITIAL RELEASE | 6/25/13 | AMK |



| ITEM NO. | PART DESCRIPTION | |
|-----------------|---|---|
| 7902-BTC | 1902 Top, Black, w/ Cover Plate | 1 |
| 5014-BD | 1902 Top | 1 |
| 5020-BD | Bottom Bracket Cover | 1 |
| 7132 | 1/4"-20-5/8" Screw, Slotted, Truss, SS304 | 2 |
| 7801-3 | Washer Kit, Tri-Stud | 2 |
| 7118 | Washer, Tri-Stud, SS304 | 1 |
| 7136 | 5/16"-18 Hex Nut, Nylock, SS304 | 3 |
| 7138 | 5/16" Washer, Lock, SS304 | 3 |
| 5015-B | 1902 Bottom, Black | 1 |
| 7801-S | Washer Kit, Single Stud | 2 |
| 7119 | Washer, Single Hole, SS304 | 1 |
| 7136 | 5/16"-18 Hex Nut, Nylock, SS304 | 1 |
| 7138 | 5/16" Washer, Lock, SS304 | 1 |

| | | | | | | |
|--|---|---------|--|------------------------------------|-----------------|---------------|
| DRAWN CHECKED ENG APPR. MFG APPR. | NAME | DATE | UNLESS OTHERWISE SPECIFIED: DIMENSIONS ARE IN INCHES TOLERANCES: ANGULAR: MACH ± 1/32" TWO PLACE DECIMAL ± .03" THREE PLACE DECIMAL ± .010" | COST CAST, INC TITLE: 1902-B | | |
| | H. E. RB | 6/25/13 | | | | |
| | PROPRIETARY AND CONFIDENTIAL THE INFORMATION CONTAINED IN THIS DRAWING IS THE SOLE PROPERTY OF COST CAST, INC. ANY REPRODUCTION IN PART OR AS A WHOLE WITHOUT THE WRITTEN PERMISSION OF COST CAST, INC. IS PROHIBITED. | | | TWO-WAY BRACKET ASSEMBLY | | |
| | INTERPRET GEOMETRIC TOLERANCING PER: MATERIAL: VARIOUS FINISH: VARIOUS DO NOT SCALE DRAWING | | | SIZE: A | DWG. NO.: 13762 | REV: A |
| | | | SCALE: 1:5 | WEIGHT: | SHEET 1 OF 1 | |