

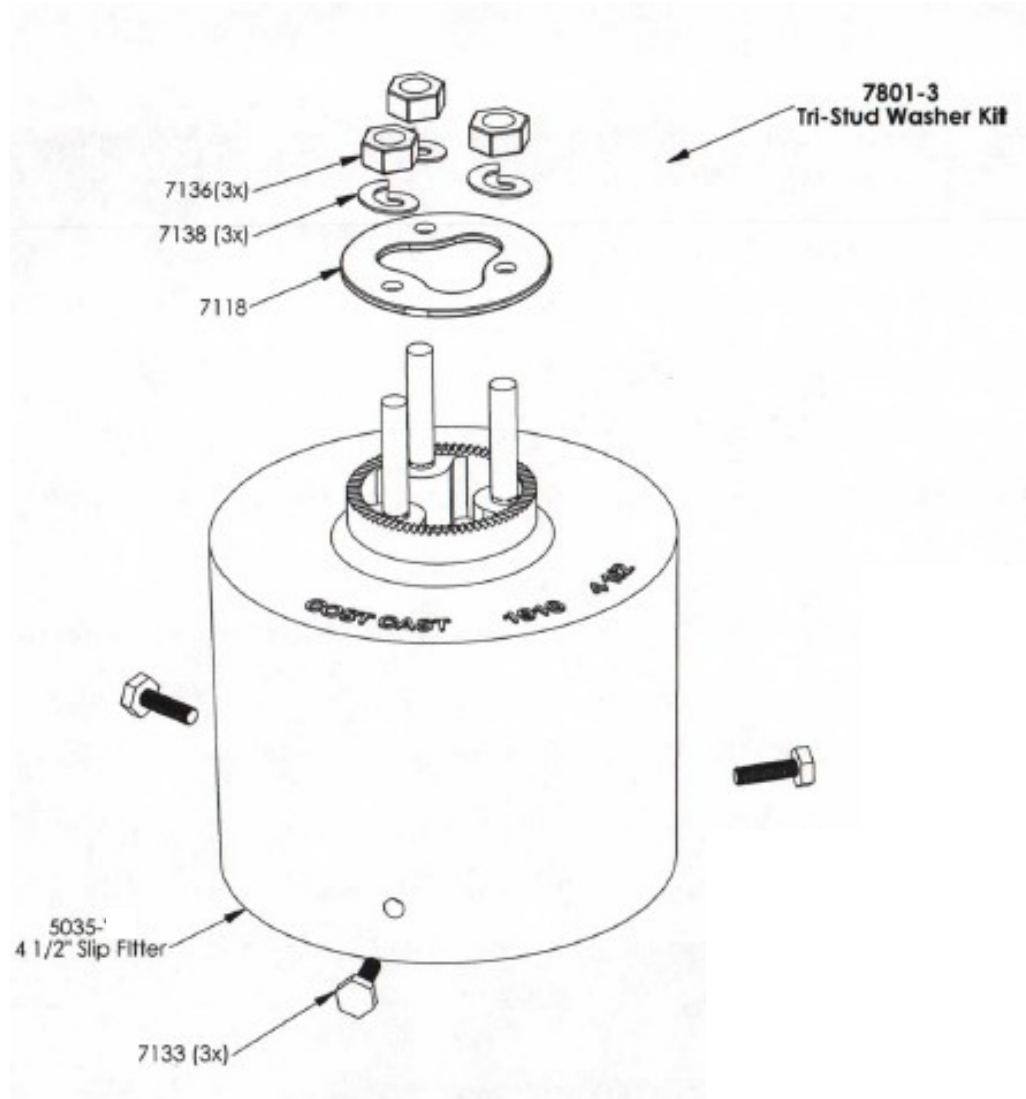


# COST CAST, INC

TRAFFIC SIGNAL AND SIGN MOUNTING HARDWARE

## Post Top Slip Fitter

### 1910-B45



- Cast From High Quality Certified Aluminum Ingot
- Certified Stainless Steel Hardware
- Black Weather Resistant Powder Coating.
- Available in two sizes to fit 4" and 4 1/2" OD posts



COST CAST, INC. MANUFACTURES THE "ZERO FAILURE" TRAFFIC SIGNAL HARDWARE EXCLUSIVELY MADE IN AMERICA.