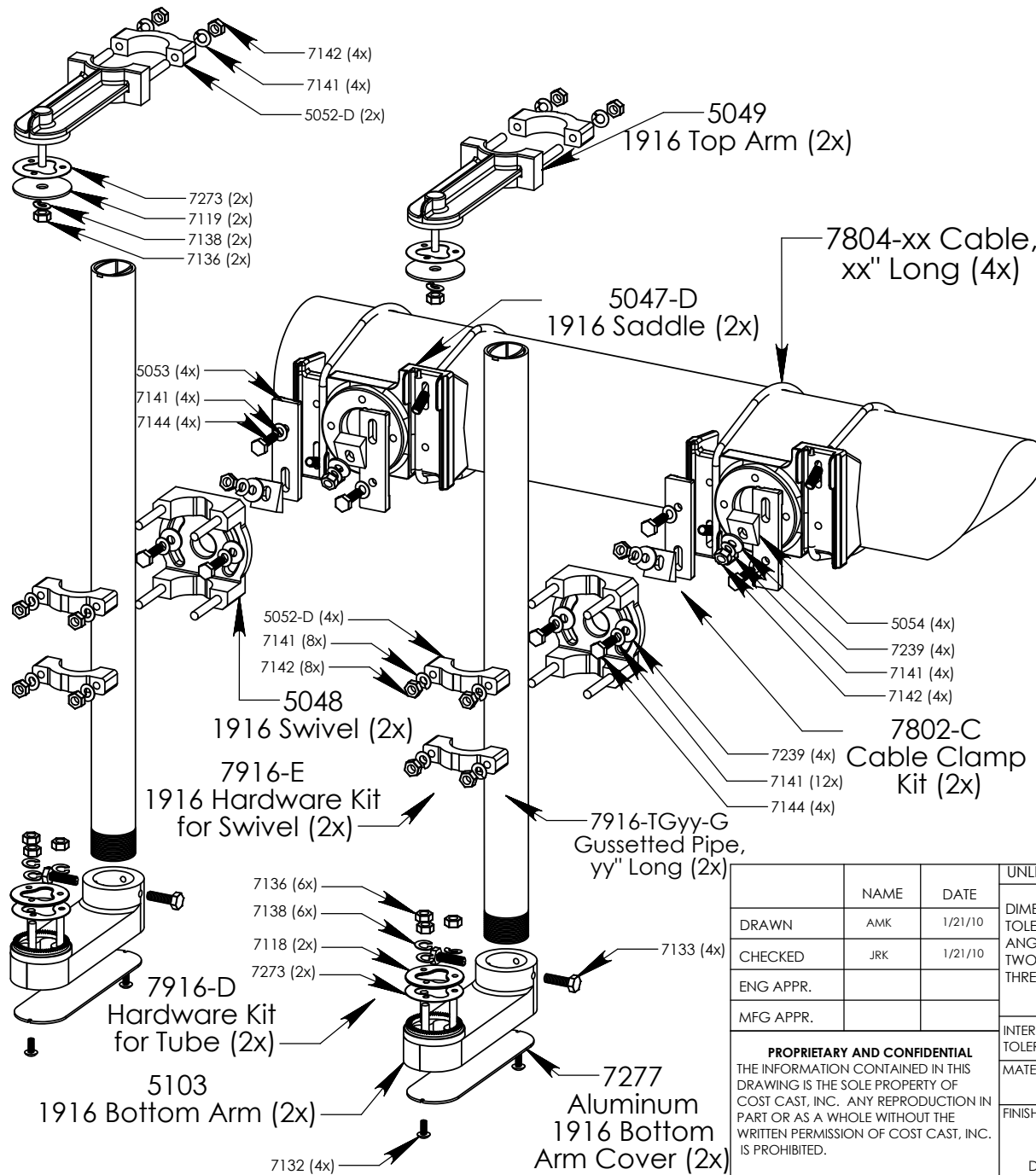


REVISIONS			
REV.	DESCRIPTION	DATE	APPROVED
A	Initial Release	1/21/2010	GMK



ITEM NO.	PART DESCRIPTION	
5047-D	1916 Saddle, Al Alloy 535.0	2
7804-xx	Aircraft Cable, xx" Long, 3/8" Swage, SS304	4
5048	1916 Swivel, AL Alloy 535.0, Cast in 3/8"-16 SS304 Studs (4)	2
5049	1916 Top Arm, Al Alloy 319.0, Cast in 3/8"-16 SS304 Studs(2), Cast in 5/16"-18 SS304 Stud(1)	2
5103	1916 Bottom Arm, Al Alloy 535.0, Cast in 5/16"-18 SS304 Studs (3), Pipe Thread	2
7277	1916 Bottom Arm Cover, Aluminum	2
7916-TGyy-G	Gusseted Pipe, yy" Long, Al Alloy 6061-T6	2
7802-C	Cable Clamp Kit	
5053	Mast Arm Cable Clamp, Al Alloy 319.0	4
5054	Mast Arm Cable Wedge, Al Alloy 319.0	4
7144	3/8"-16 x 1-1/4" Cap Screw, SS304	4
7239	3/8" Washer, Flat, Oversized, SS304	4
7141	3/8" Washer, Lock, SS304	8
7142	3/8"-16 Nut, SS304	4
7916-E	1916 Hardware Kit for Swivel	
5052-D	1916 Cap, Al Alloy 535.0	4
7144	3/8"-16 x 1-1/4" Cap Screw, SS304	4
7239	3/8" Washer, Flat, Oversized, SS304	4
7141	3/8" Washer, Lock, SS304	12
7142	3/8"-16 Nut, SS304	8
7916-D	Hardware Kit for 1916 Tube, Illuminated Sign	
5052-D	1916 Cap, Al Alloy 535.0 (for Top Arm)	2
7141	3/8" Washer, Lock, SS304 (for Top Arm)	4
7142	3/8"-16 Nut, SS304 (for Top Arm)	4
7133	1/4"-20 x 3/4" Set Screw, SS304	4
7132 (or 7172)	1/4"-20 x 5/8", Truss (or Round) Head, SS304	4
7119	Single Hole Washer, .090" Thick, SS304	2
7118	Tri-Stud Washer, .090" Thick, SS304	2
7273	Neoprene (Rubber) Tri-Stud Washer	4
7138	5/16" Washer, Lock, SS304	8
7136	5/16"-18 Nylock Nut, SS304	8

UNLESS OTHERWISE SPECIFIED:		
DRAWN	NAME	DATE
CHECKED	JRK	1/21/10
ENG APPR.		
MFG APPR.		
DIMENSIONS ARE IN INCHES TOLERANCES: ANGULAR: MACH ± 1/32" TWO PLACE DECIMAL ± .03" THREE PLACE DECIMAL ± .010"		
PROPRIETARY AND CONFIDENTIAL THE INFORMATION CONTAINED IN THIS DRAWING IS THE SOLE PROPERTY OF COST CAST, INC. ANY REPRODUCTION IN PART OR AS A WHOLE WITHOUT THE WRITTEN PERMISSION OF COST CAST, INC. IS PROHIBITED.		
INTERPRET GEOMETRIC TOLERANCING PER: MATERIAL VARIOUS FINISH VARIOUS DO NOT SCALE DRAWING		

COST CAST, INC		
TITLE:		
1916-L-Cxx		
SIZE	DWG. NO.	REV
A	13728	A
SCALE: 1:20		WEIGHT:
		SHEET 1 OF 1